

N.W. 1/4  
SECTION 1, T.6N., R.3W., S.L.B.& M.

TAXING UNIT: 531

IN WEBER COUNTY

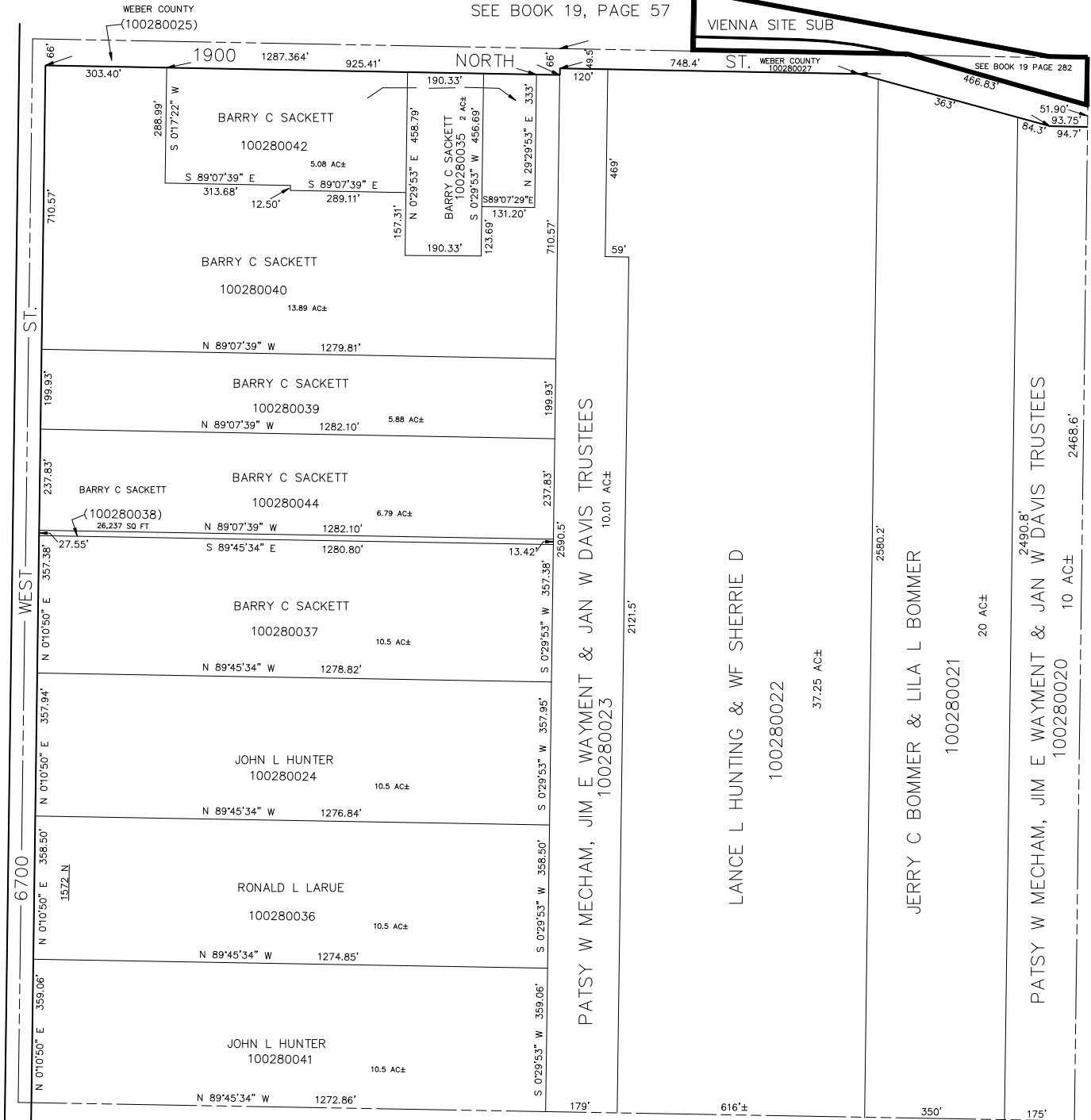
SCALE 1" = 200"

SEE BOOK 19, PAGE 57

VIENNA SITE SUB

SEE PAGE 29

SEE PAGE 28



SEE PAGE 28-2